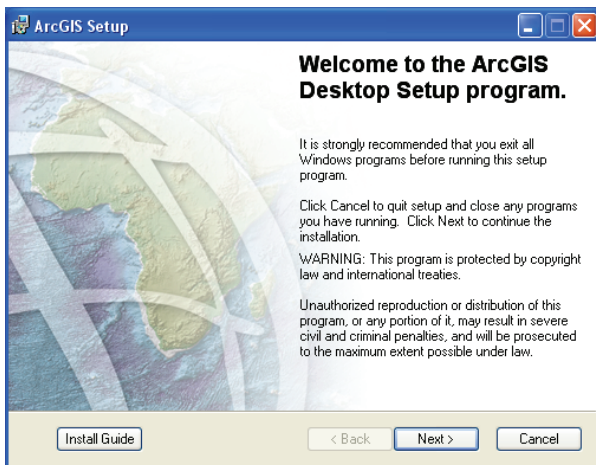


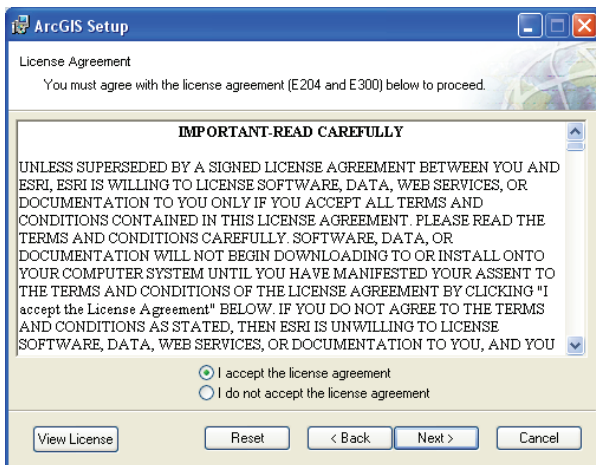
”Arcgis desktop” vælges ...



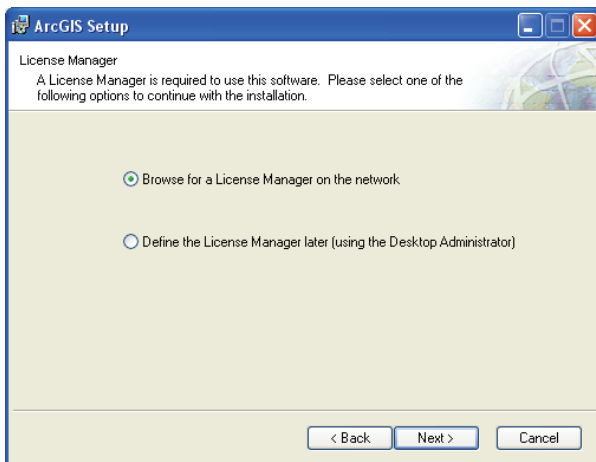
Vælg ”Install Arcgis desktop”



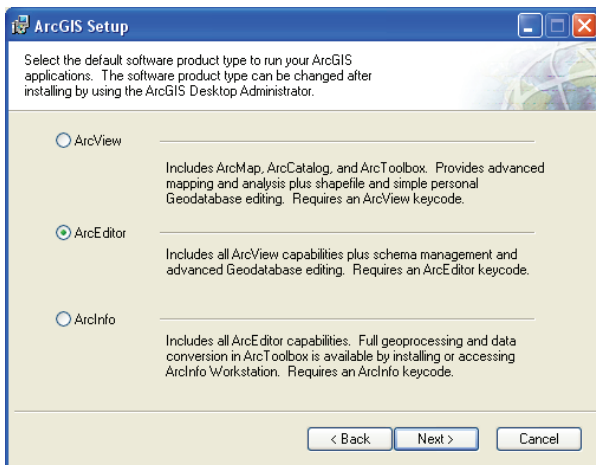
vælg "next"



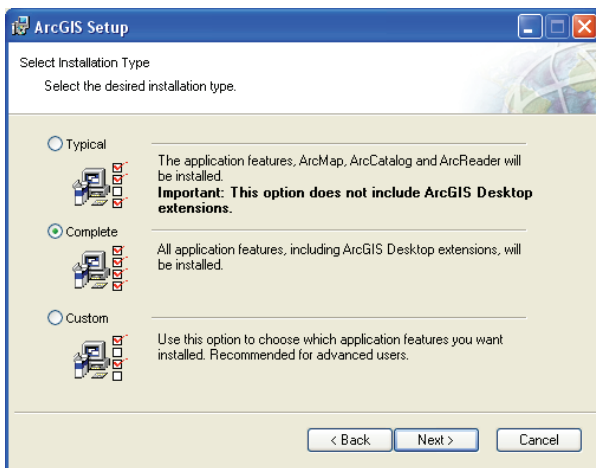
Vælg "I accept"



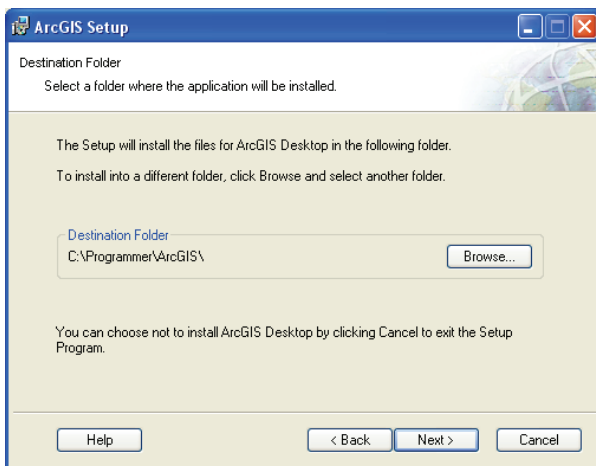
Vælg "Browse for ..." og angiv navnet på licensserveren: "PlanLicense"



Efter eget valg klikkes på "ArcView", "ArcEditor" eller ArcInfo"



Vælg "Complete"



Vælg "next"

